

Welcome to OSU in Tulsa!

JJ Smith

Assistant Director of Student Services
Title IX Deputy Coordinator
OSU-Tulsa Student Conduct Officer



TULSA

New Student Orientation Agenda



1. Important information you need to know
 2. Review services available
 3. Question & Answer

Student I.D.'s

North Hall 130

Monday – Friday from 8 a.m. – 5 p.m.



You will need your OSU I.D. to access campus services.

The first one is FREE. You will be charged a replacement fee if you lose your I.D.

Navigating OSU-Tulsa Online



OKey, Self Service & Canvas



Students are given access to three computing systems used to manage academic and personal records, e-mail, and on-line classes. Each system stands alone and is administered independently. Information in each of the systems is synchronized nightly. It's important to know how and when to use each system.



Your OKey Account

“O-Key” is short for Orange Key, and is the information account management system used by OSU for email, student self-service and a host of other functions including Wi-Fi login, campus computer log-in.

Student Self-Service (my.okstate.edu)

This is where you add/drop classes, view your grades, accept and reject financial aid/ scholarships, update personal information, request and transcript, etc.



Canvas

Canvas is the online classroom management software.
(Refer to the link stuck to the inside of your folder for tutorials).

Staying informed...



OSU-Tulsa Home Page


- Front Page for big events (campus closings)
- Events Calendar

Social Media

- Facebook
- Twitter

TV Monitors/Digi Signs around campus

Important Offices



How can we
help you?



Academic Advisement

Location: North Hall 130

Telephone: 918-594-8271

OSU assigns academic advisors based on major

College of Arts and Sciences & MIS

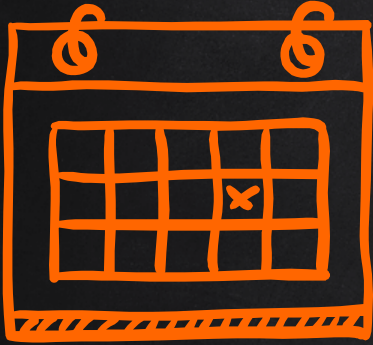
College of Engineering

College of Human Sciences, Education, Health &
Aviation

Spears School of Business

University Studies/Undecided

Academic Advisement Continued...



Undergraduate students are required to meet with their academic advisor prior to enrollment each semester.

Advisement offers a few walk-in days each semester, but it's better to plan ahead and make your appointment two weeks prior to your enrollment date.

Purchasing Textbooks

OSU-Tulsa does not have a physical bookstore. All textbooks are ordered online through the bookstore in Stillwater.

Visit <https://www.shopokstate.com/courselistbuilder> to enter your courses and purchase your books.

Textbooks will be mailed to the address you provide.



During Your First Semester

Submit Your Immunization History

Oklahoma state law requires that all new students attending Oklahoma colleges and universities for the first time provide proof of immunization for:

- Three shots of hepatitis B
- Two shots of measles-mumps-rubella (MMR)
- Tuberculosis Testing for all incoming international students

Complete Title IX Training

All new students are required to complete online 1 is 2 Many training, an online sexual violence prevention program. You will be required to complete the training before you can enroll in next semester courses and to score at least 80% on the quiz at the end.

Writing Center

Main Hall 2302

(918)594-8232

tulsa.testing@okstate.edu



Need help with a writing assignment? Are you looking for good advice on how to improve your study skills? If you feel that you could use some extra help in any of these areas, then come visit the Learning Services Center.

During one-on-one conferences, our consultants will help you with many types of writing assignments such as essays, research papers, creative writing and technical or business documents.

Testing Center

Main Hall 2302

(918)594-8232

tulsa.testing@okstate.edu



OSU-Tulsa Learning Services Center offers testing services for the faculty and students at Oklahoma State University as well as non-OSU students in the community and state.

Proctored testing for online exams or exams from other universities/organizations including but not limited to the following:

Make-up exams

Independent Study Exams

College-Level Examination Program (CLEP)

Test of English Language Proficiency (TELP)

Distance Learning Exams

Miller's Analogy Test (MAT)

GRE subject exam Compass Placement

Student Accessibility Services

North Hall 204

(918)594-8354

Student Disability Services (SDS) provides support services to students with disabilities and is committed to providing equal access to programs, services and activities.

- Instructor Notification
- Specialized Testing
- Classroom Accommodations
- Mobility Training
- Interpreter Services
- Assistive Technology
- Reader Service
- Additional Specific Services available as identified on an individual basis



**Student Accessibility Services cannot make accommodations until a student signs up for services.
Please call us!**

OSU-Tulsa Library

1st Floor/Main Hall

(currently in a temporary location)

(918)594-8130



Hours of Operation

Monday - Thursday 10:00am to 7:00pm

Friday 8:00am to 5:00pm

Saturday 9:00am to 5:00pm

CLOSED SUNDAY

These hours are subject to change. Please check our hours page for up-to-date information regarding our hours of operation.

tulsa.okstate.edu/library/



Learn how to use the Library

Instructional information on how to use the library and its services is available on the library's home page. For individual Student Orientation Sessions, contact the Reference Desk at (918)594-8137 for an appointment.

Copy machines

Two copy machines are available in the Library and one is located outside the Library entrance/exit.

Computers

Computers are available in the library for research purposes.

Group Study Rooms

Schedule group study rooms through the Library.

IT Helpdesk & Free Software

Phone: 405-744-HELP(4357) or 1-877-951-4836 (toll free)

Email: helpdesk@okstate.edu

Phone Support Hours:

Monday-Friday: 7 a.m.-12 a.m.

Saturday: 10 a.m.-5 p.m.

Sunday: 2-11 p.m.

Walk up support OSU-Tulsa is located in Main Hall 2314. Walk-up support hours are as follows:

Monday-Friday: 8 a.m.- 8:20 p.m.

Saturday: 1-5 p.m.

Sunday: 1-9 p.m.

FREE Software Distribution for Students

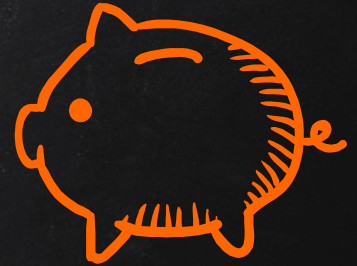
The Software Distribution Center is where OSU students can go to download OSU licensed software. The software is made available at no cost through contracts negotiated with major software companies.

Scholarships & Financial Aid

North Hall 130

(918)594-8273

tulsa.financialaid@okstate.edu



Appointments

Our financial aid counselors are available to meet by appointment in person, online via Zoom or on a phone call. In-person walk-in appointments are not available at this time.

Virtual Walk-in Wednesdays

Meet with a financial aid counselor during our virtual walk-in hours each Wednesday this fall. Register and we will send you a link and instructions for how to connect.

Let's Talk Online Form

Have a quick financial aid question? Use the Let's Talk online form to get answers.

Financial Aid Disbursement



- Scholarships, grants and loans are credited (disbursed) to student's OSU Bursar account during the first week of classes.
- A credit to the student's OSU Bursar account is **NOT** a deposit in the student's bank account.
- The Bursar Office processes refunds after all charges have been paid.
- Sign up for Direct Deposit with Bursar: bursar.okstate.edu/refunds

Career Services

North Hall 103

(918)594-8404

tulsa.careerservices@okstate.edu

Career Services is available to assist students who are seeking full-time, part-time or internship positions. Students are encouraged to register with Career Services as soon as possible to maximize opportunities.

Other services available through Career Services include:

- Career Assessments
- Job Postings & Resume Referrals
- Handouts & Resource Area
- Job Search Workshops
- Mock Interviews
- Resume and Cover Letter Assistance
- Career Fairs
- Career Closet



CAREER *events*

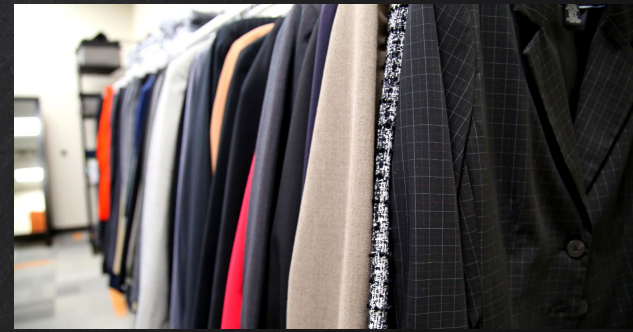
OSU-Tulsa hosts a career fair every fall and spring semester. The companies that attend are interested in all majors and degrees. OSU-Stillwater hosts many other career fairs that we encourage you to attend as well. For a list of upcoming career fairs and the employers visiting campus go to [HireOSUGrads.com](https://www.hireosugrads.com).

The Career Services Office hosts several workshops each semester. Past topics include:

- Salary Negotiation
- Finding Your Why
- How to Prepare for the Career Fair
- Navigating the Career Fair
- Discovering Your Strengths

Career Closet

The Career Closet gives currently enrolled students the opportunity to obtain FREE professional attire for interviews, career fairs, conferences and any other professional event.

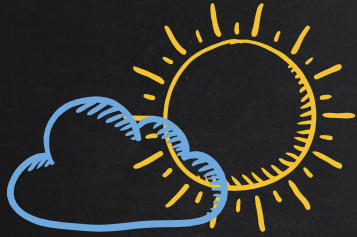


How the Career Closet Works

Email tulsa.careerservices@okstate.edu to make an appointment.

Students are allowed to take items for a suit once per academic year. For example, a student may pick a jacket, pant, shoes and a belt to put together a suit.

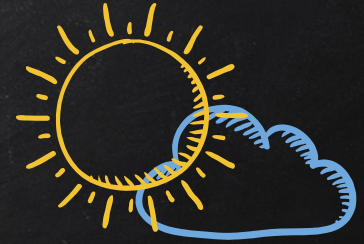
Items are for the students to keep! If a student wishes to return items, Career Services requires the item to be dry cleaned before returning.



Counseling Center

Main Hall 2403

(918)594-8568



Services Provided

Individual Therapy

Family Therapy

Couples Therapy

Some assessment and testing services are also available

The OSU-Tulsa Counseling Center provides services to children over the age of 15, adolescents, and adults who are residents of the community, including students, staff and faculty affiliated with Oklahoma State University.

Services are provided by Counseling Psychology and Community Counseling Graduate Students and supervised by faculty members.

Counseling Center continued...

Fees

Counseling fees are based on a sliding scale system. Fees are determined by the total yearly income and the number of persons living in the home.

OSU students, faculty and staff receive the first five sessions **free**, and subsequent sessions are \$5 each.

Our Staff Are Trained To Work With The Following Symptoms, Problems, Or Related Issues:

Anxiety
Relationship /Family Issues
Sleep Disturbances
Sexuality
Substance Abuse
Suicide
Academic Problems
Time Management

Depression
Trauma
Eating Disorders
Poor concentration
Grief
Work Transition
Study Skills



Campus Life

North Hall 103

(918)594-8450

tulsa.campuslife@okstate.edu



OSU-Tulsa Campus Life works to enhance student success by offering a wide range of opportunities for students to develop socially, personally and professionally.

Student Clubs & Organizations

Addiction & Mental Health Advocacy Association (AMHA)

African American Student Association (AASA)

American Society of Mechanical Engineers (ASME)

Chi Sigma Iota

Educational Psychology Student Society (EPS2)

Health Promotion Club (HP Club)

Hispanic Student Association (HSA)

International Student Ministries

International Student Organization (iSO)

Materials Research Society

National Student Speech, Learning & Hearing Association (NSSLHA)

OSU Cineculture Club

President's Leadership Society (PLS)

Student Association for Materials Process Engineering (SAMPE)

Tau Sigma National Honor Society



Discounted Tickets

All Star Sports Complex
AMC Movie Theater
B&B Movie Theater
Safari Joe's (seasonal)
Tulsa State Fair (seasonal)



Tickets may be purchased with cash or check only in 103 North Hall.

Institutional Memberships

OSU-Tulsa has institutional memberships to

Gilcrease Museum

&

Philbrook Museum

Simply show your I.D. at either of these museums and enjoy free admission. General admission only, special events not covered by membership.

In addition to free admission, Gilcrease also provides a discount in the museum store, The Restaurant at Gilcrease and on enrollment fees for classes and seminars.

OSU Athletic Event Tickets

All Sports Pass



General Admission Seating: \$ 250

The All Sports Pass includes access to all ticketed OSU Sports.

The ALL Sports Pass Branch Campus Order Form may be picked up in Campus Life (130 North Hall).

Branch campus students and spouse/dependent tickets will need to fill out the respective order form and return it with a copy of your student I.D. card to the OSU Ticket Office at:

FAX: 405-744-5538 or

MAIL: OSU Ticket Office

136 Athletics Center

Stillwater, OK 74078

Branch campus students will be issued an activity card that will be used as their All Sports Pass. This pass cannot be replaced, reissued, or reprinted.

Frequently Asked Questions...

Will cards be available for spouses and/or dependents?

Yes, an All Sports Card will be available for spouses and/or dependent(s) of an Oklahoma State student. You will need to fill out the form and provide documentation that proves that the individual(s) you are buying the card(s) for are your spouse and/or dependent(s). However, the card will only work for the designated sport and will not allow entrance to other OSU athletic events.

If I purchased a spouse/dependent card previously, do I have to provide documentation again?

Yes. Every year you purchase a dependent or spouse card, you will need to provide the correct documentation.

May I get a replacement spouse/dependent card if I lose the card or it is stolen?

No. The spouse/dependent cards are irreplaceable. You will not be issued a second card if the first card is lost or stolen.



Campus Cupboard

It's hard to focus on academics when your pantry is empty or you need basic hygiene supplies. That's where OSU-Tulsa's Campus Cupboard comes in.

How it works

Visit Campus Life in **North Hall 103 Monday-Friday from 8 a.m.-5 p.m.** to fill out a form and pick up items. Students who prefer may send an email to tulsa.campuslife@okstate.edu and we will send the form to you and arrange a time for you to pick up items.

Items Available

The following are examples of the types of items available in the OSU-Tulsa Campus Cupboard: non-perishable food like granola bars, soup, ready-to-eat meals, canned fruits and vegetables, boxed dinners, pasta, toothpaste, deodorant, soap and feminine hygiene products.



Wellness Center

North Hall 116

(918)594-8126



Student, faculty and staff membership is free of charge (a current OSU ID is required at time of enrollment).

Submit the online Wellness Center enrollment form to enroll **EVERY** semester.

Hours of Operation

Mon. – Fri. from 6 a.m. – 10 p.m. & Sat. from 7 a.m. – 3 p.m.

Equipment & Facilities

The Wellness Center features a wide range of equipment for all fitness levels, locker rooms and storage cubbies for member convenience.

CARDIO EQUIPMENT

- 3 treadmills
- 3 elliptical machines
- 1 upright bike
- 3 recumbent bikes
- 1 rowing machine

ADDITIONAL ACCESSORIES

- 3 fitness balls
- 5 medicine balls
- Resistance bands of varying levels
- Ab/stretching mats

WEIGHT MACHINES

- 10 pre-loaded machines
- 1 bench station
- 1 squat rack
- 1 smith machine
- 1 cross-trainer machine

OUTDOORS

- Quarter-mile run/walk path



Wellness Center Services

- Equipment Orientation
- Fitness Assessment
- Personal Training Sessions
- Personalized Fitness Plans
- Blood Pressure Screenings
- Body Composition Analysis
- Nutritional Advice
- Health Education Sessions



Fitness Studio

North Hall 117

The OSU-Tulsa Fitness Studio is located across from the Wellness Center in North Hall 117. The studio offers wellness classes throughout the week and hosts lunch and learns, clinics and other wellness programs.

The Fitness Studio and all classes are available **free of charge** to students, faculty and staff.

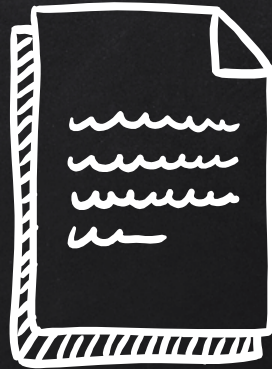
Classes vary from semester to semester, but have included Yoga, Power Yoga, Barre, Zumba and Step Aerobics.



Reading Your Schedule

NCB = North Hall

MCB = Main Hall



University Police & Campus Safety

Main Hall 1401

Emergency Number: 918-594-8123 | Non-Emergency: 918-594-8124

OSU-Tulsa University Police is a division of the OSU Police Department. Our police officers are dedicated to providing a safe environment for students, faculty, staff and visitors.

Cowboy Alert

OSU uses the Cowboy Alert system to notify students, faculty and staff in an emergency.

Notifications may be sent for events including:

- Campus closure
- A campus intruder
- Acts of terrorism
- Severe weather threats
- Biohazard threats

Rave Guardian - Campus Safety App



As part of OSU's commitment to campus safety, we offer Rave Guardian, a free mobile app that turns any smartphone into a personal safety resource. With Rave Guardian, one app covers the following OSU campuses:

- OSU Stillwater
- OSU Institute of Technology (Okmulgee)
- OSU Tulsa
- OSU Center For Health Sciences

When visiting a different institution, use the settings wheel in the upper right corner of the app to choose a different campus.

The Rave Guardian app can be downloaded in the Apple or Google Play app stores by searching for "Rave Guardian."

Parking Permits

We don't use them!

We have plenty of parking.



Remember...

We're one University with multiple campuses.

You are an OSU student!



Questions?